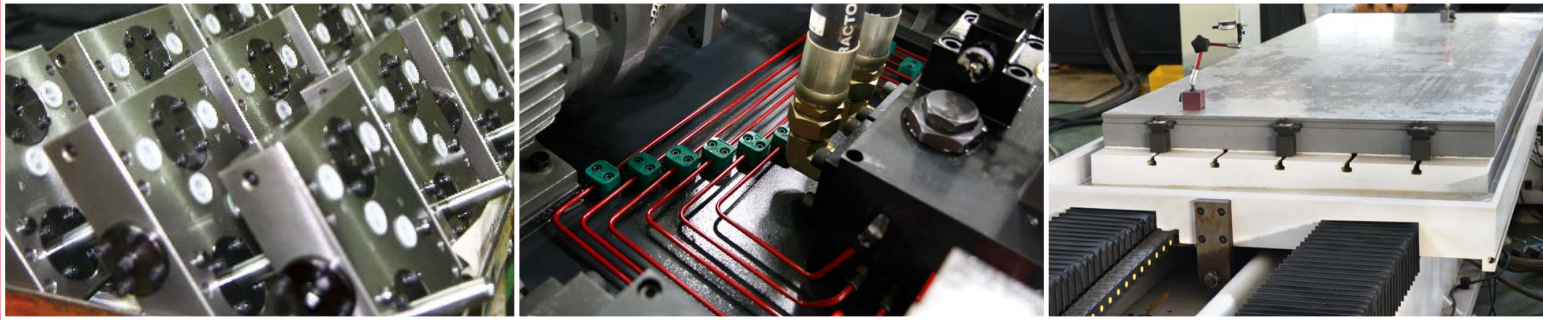




JUN CHUNG



平面磨床閥

平面磨床液壓站

磨床專用定量泵 (大排量)

Hydraulic Valves for Surface Grinder

Hydraulic Power Unit for Surface Grinder

Fixed Displacement Vane Pumps Apply to Surface Grinders
(Mega Flow Rate)



駿全興股份有限公司
JUN CHUNG SHING CORP., LTD.

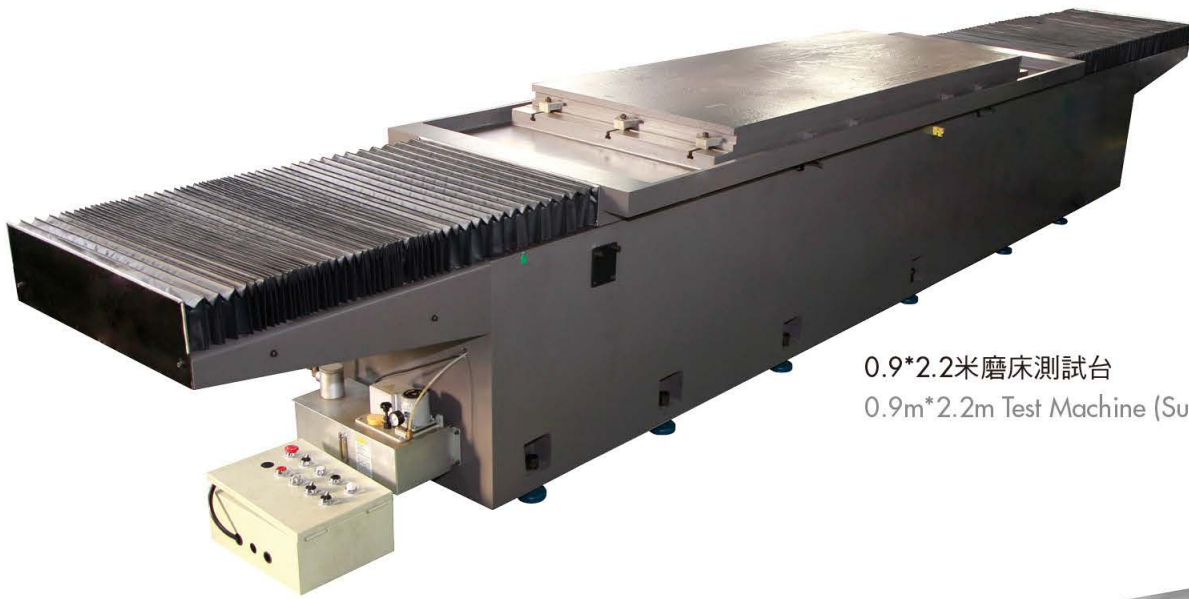
「專業、創新、突破、服務」

| www.junchung.com.tw |

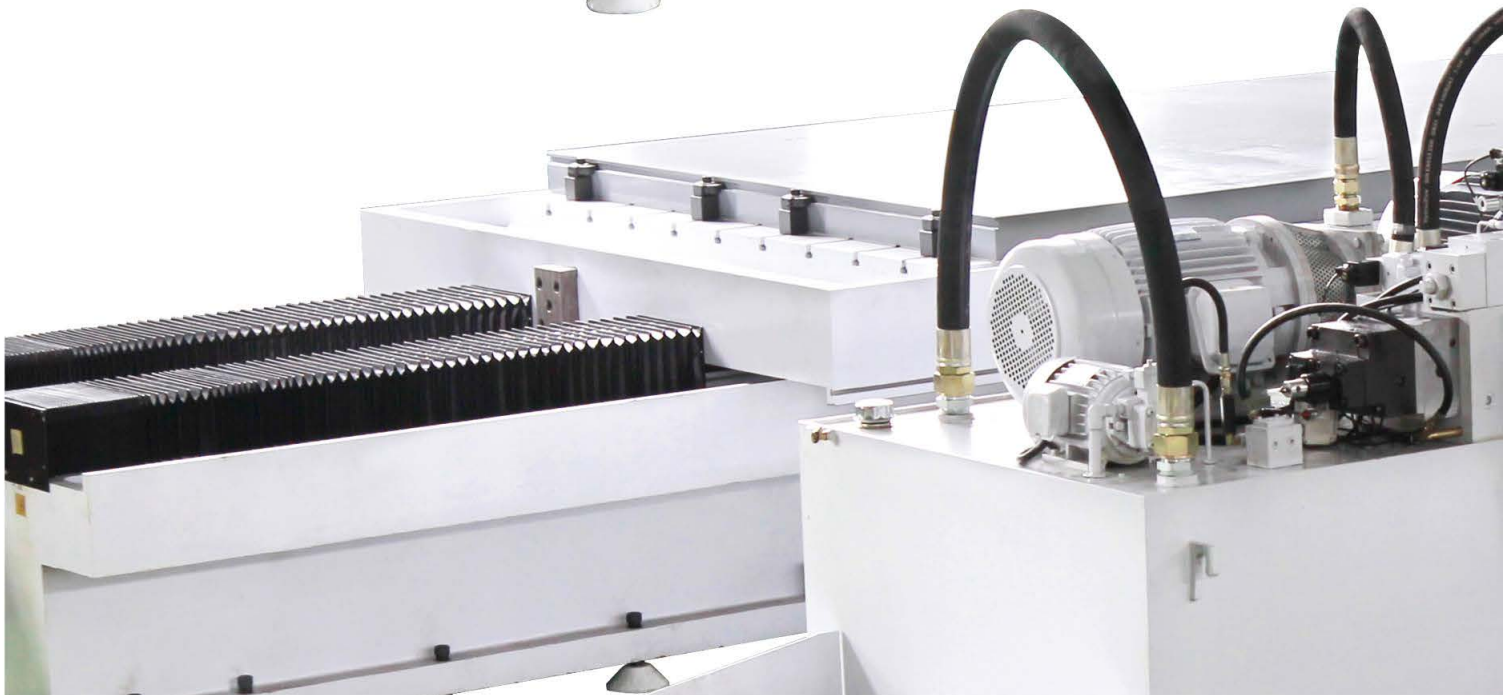
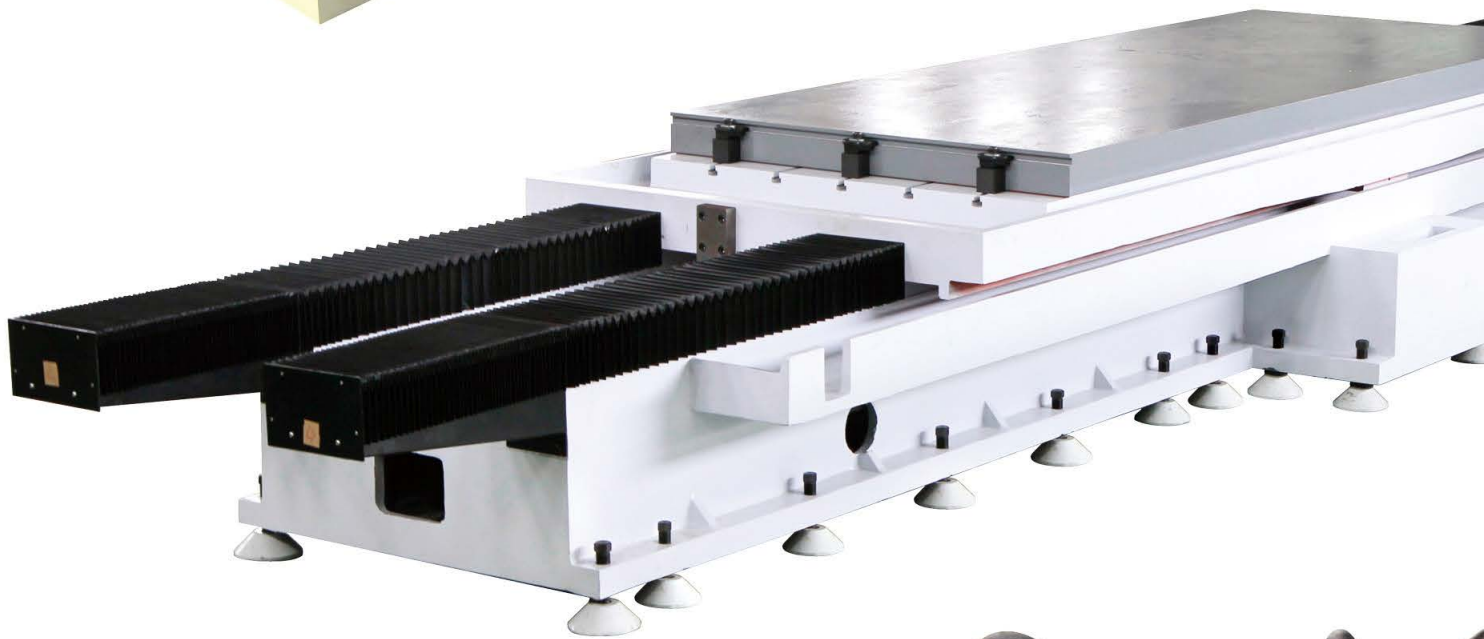
駿全興公司 西元1975年由葉鴻圖先生創立 駿全工業有限公司。並於成立初期專業設計生產各種油壓控制閥、輪葉幫浦。1985年開始量產壓力開關，為台灣自製壓力開關之領導品牌-JC奠定基礎，並成功開發出平面磨床用電磁引導式換向閥、圓筒磨床用換向閥、並投入量產。於1997年更名為 駿全興股份有限公司。主要產品為-壓力開關、疊加閥、及平面磨床用各種油壓閥、動力組合。因應設備增加，2014年遷入新廠。駿全興股份有限公司秉持「專業、創新、突破、服務」之理念，全幅投入各系列產品的技術鑽研。因為嚴格遵行標準生產流程與製程管理，本公司於2009年9月整廠通過 ISO9001 品質認證，並於同年間，駿全興生產之壓力開關全系列通過CE認證。歷經40多年，以一步一腳印的努力過程，公司規模業績在穩定中逐漸成長茁壯。堅持以品質優先原則，輔以技術創新，努力降低成本，並期待您的支持與指教。

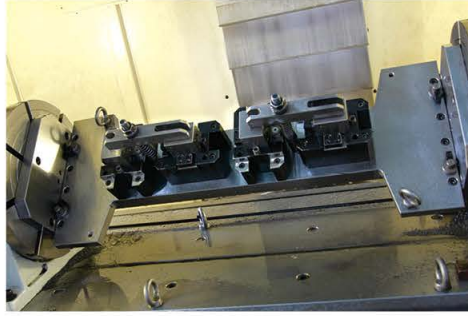
The Jun Chung (JC) Industry Company was established by Mr. Hung-Tu Yeh in 1975. Its professional team started by designing and producing various hydraulic control valves and vane pumps. Since 1985, it expanded to include industrial-grade pressure switches and advocated as the worldwide leader in TAIWAN-MADE hydraulic pressure switches. During the expansion, it successfully created directional control valves for both surface and cylindrical grinding machines. The JC Industry Company was re-established as Jun Chung Shing Co., Ltd. in 1997 specializing in pressure switches, modular hydraulic valves, and power units. It imported and adapted cutting edge equipments and upgraded to a new factory as an effort to provide the most comprehensive products and services to its clients. More importantly, it believed that professionalism, innovation, creativity, and quality services are the essence to client satisfaction and trust. Adhere strictly to standardized process and production flows, Jun Chung Shing Co. LTD and its manufacturing facility were awarded with the ISO9001 Quality Accreditation since September of 2009. During the same year, the company's full line of pressure switches were also granted the CE certification. Over 40 years, it strives to broaden scale by insisting on providing quality products, decreasing client costs, and investing in the newest technologies while appreciating your supports and suggestions as it continues to grow and expand.





0.9*2.2米磨床測試台
0.9m*2.2m Test Machine (Surface Grinders)

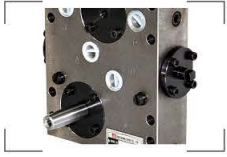




1.2米*3米龍門磨床測試台
1.2m*3m Test Machine (Surface Grinders)



2米*5米龍門磨床測試台
2m*5m Test Machine (Surface Grinders)



機械式方向閥

3K-20, 3K-25 (1020, 1224)	06
4K-25 (1632)	07
6K (2040, 2448)	08
8K (1512, 2012)	09

電磁式引導方向閥

SOL-04	10
SOL-06	11
SOL-08	12



雙位式流量控制閥

TV-AB-04	13
TV-AB-06	14
TV-AB-08	15

油壓平整閥 (砂輪修整器)

DMOW	16
------	----

流量控制閥 (雙軸)

SOL-04TV	17
----------	----

控制把手組

CS	18
----	----



平面磨床液壓站

	19
--	----

磨床專用定量泵 (大排量)

JQ3X	20
KT6CP	22
使用管徑與流速關係表	25



Mechanically Operated Directional Valve

3K-20, 3K-25 (1020, 1224)	06
4K-25 (1632)	07
6K (2040, 2448)	08
8K (1512, 2012)	09

Solenoid Pilot Operated Directional Valve

SOL-04	10
SOL-06	11
SOL-08	12



Double Way-Throttle Control Valve

TV-AB-04.	13
TV-AB-06.	14
TV-AB-08	15

For Dresser Mounted on Wheel Head

DMOW	16
----------------	----

Throttle Control Valve

SOL-04TV	17
--------------------	----

Control Shaft

CS.	18
-------------	----



Hydraulic Power Unit for Surface Grinder

.	19
-----------	----

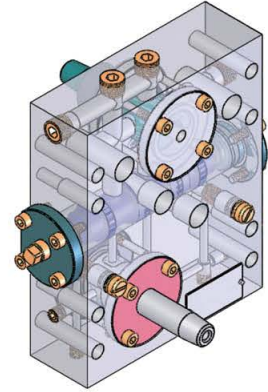
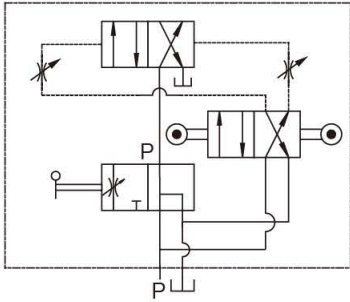
Fixed Displacement Vane Pumps Apply to Surface Grinders (Mega Flow Rate)

JQ3X.	20
KT6CP	22
Piping Diameter - Fluid Transmission - Flow Volume Drawing	25

機械式方向閥 Mechanically Operated Directional Valve

3K-20, 3K-25 (1020, 1224)

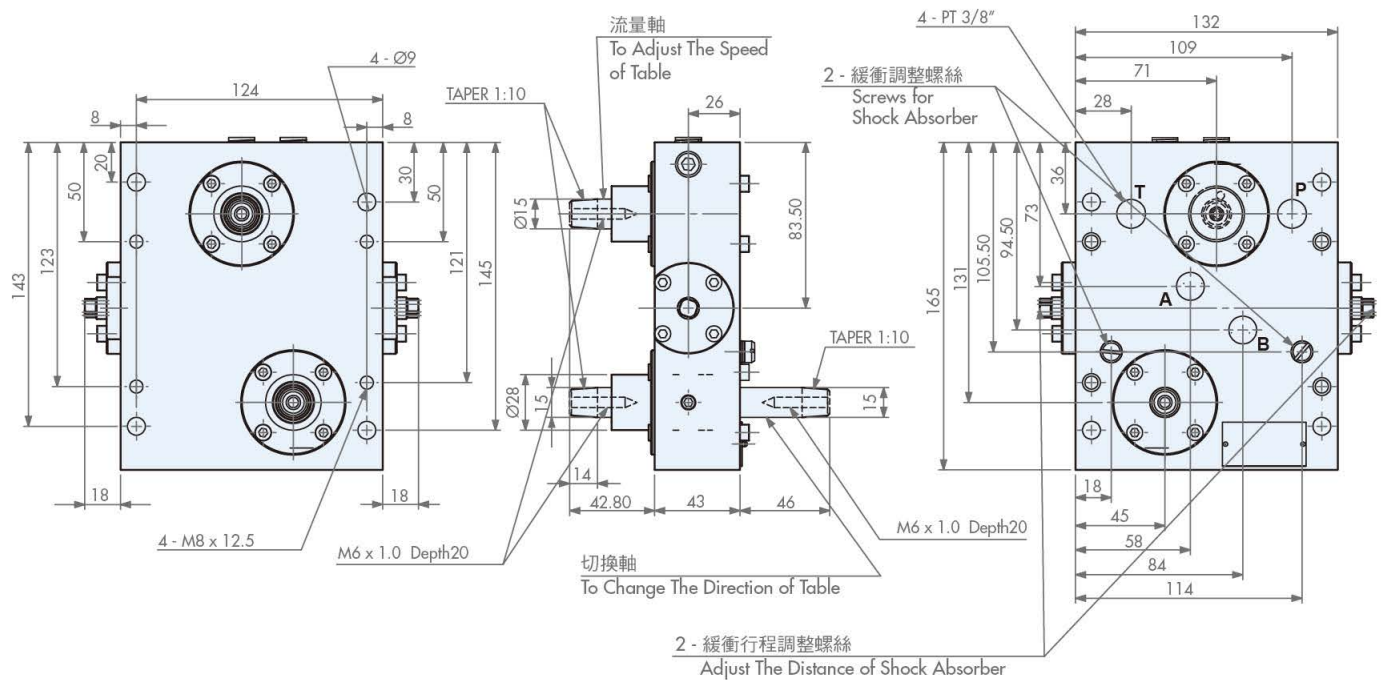
符號 SYMBOLS



規格 MODEL SPEC.

型號 Model	最大流量 Rated Flow Capacity (l/min)	最大壓力 Max. Pressure (kgf/cm ²)	口徑 Thread Connection (PT)	重量 Weight (kg)
3K-20 (1020)	20	40	3/8"	6.72
3K-25 (1224)	35	40	3/8"	6.72

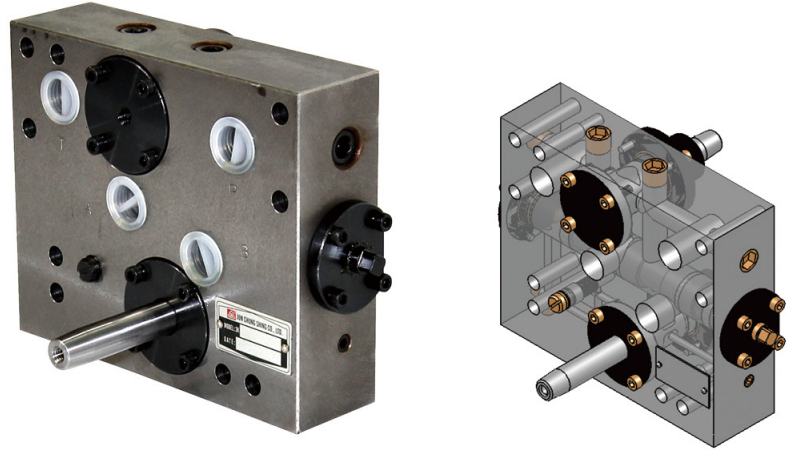
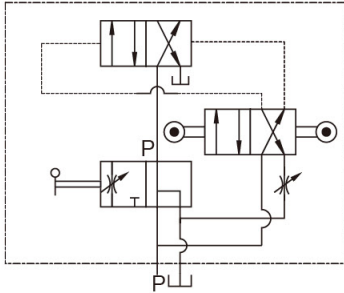
尺寸 DIMENSION (unit:mm)



機械式方向閥 Mechanically Operated Directional Valve

4K-25 (1632)

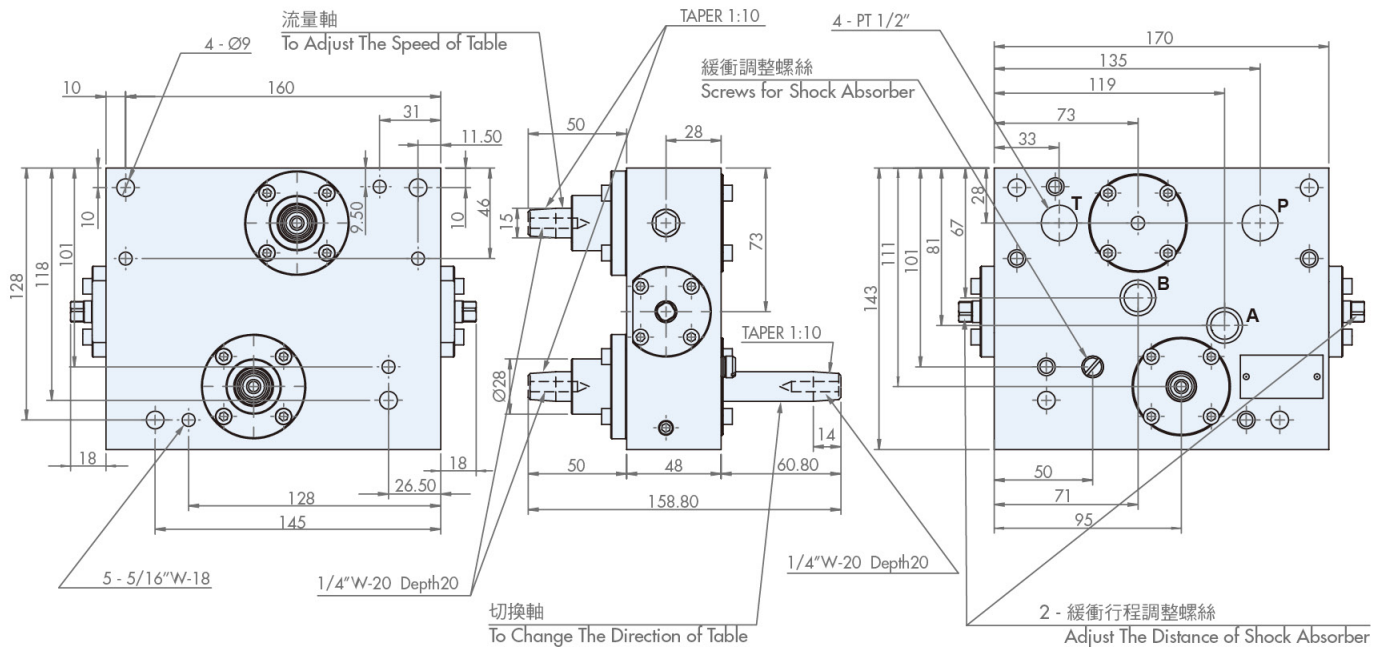
符號 SYMBOLS



規格 MODEL SPEC.

型號 Model	最大流量 Rated Flow Capacity (l/min)	最大壓力 Max. Pressure (kgf/cm ²)	口徑 Thread Connection (PT)	重量 Weight (kg)
4K-25 (1632)	60	40	1/2"	8.625

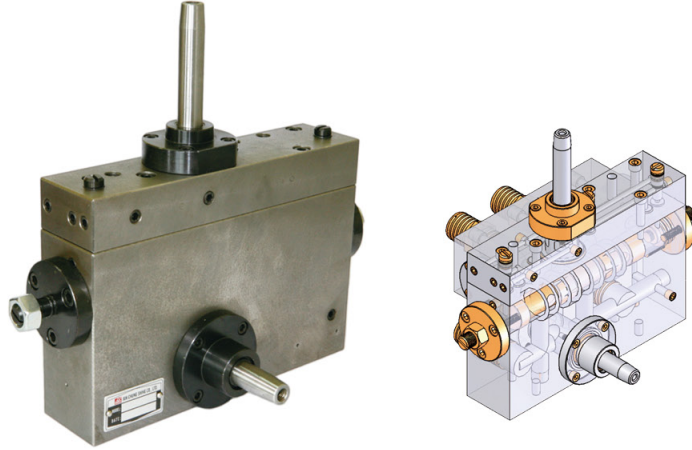
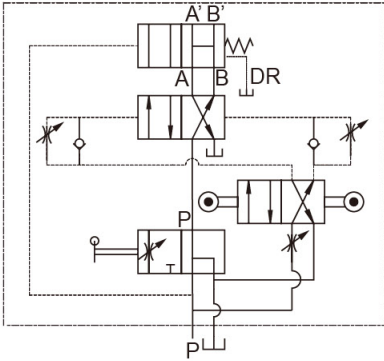
尺寸 DIMENSION (unit:mm)



機械式方向閥 Mechanically Operated Directional Valve

6K (2040, 2448)

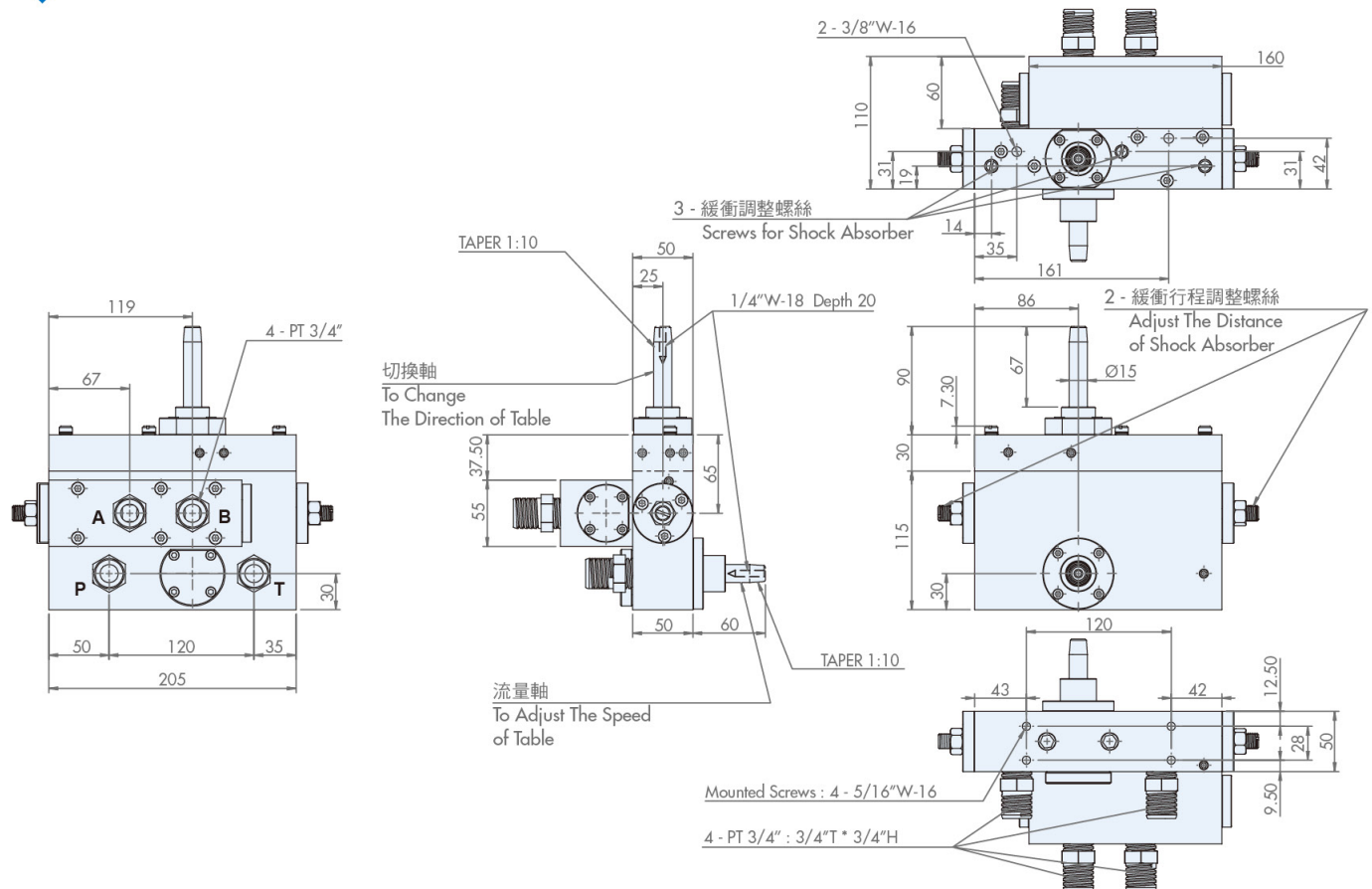
符號 SYMBOLS



規格 MODEL SPEC.

型號 Model	最大流量 Rated Flow Capacity (l/min)	最大壓力 Max. Pressure (kgf/cm ²)	口徑 Thread Connection (PT)	重量 Weight (kg)
6K (2040, 2448)	90	40	3/4"	14.6

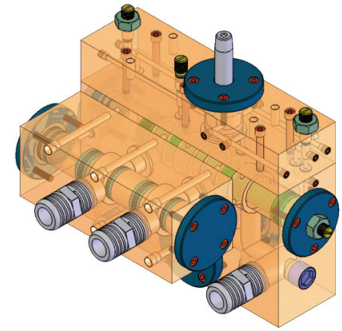
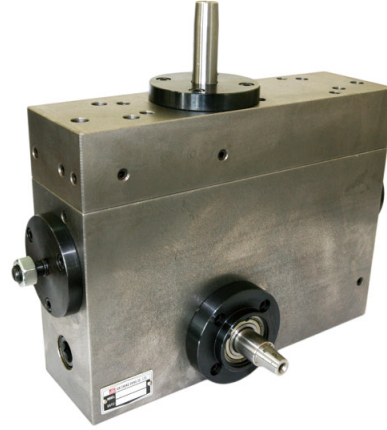
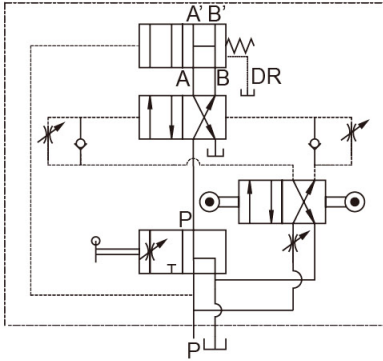
尺寸 DIMENSION (unit:mm)



機械式方向閥 Mechanically Operated Directional Valve

8K (1512, 2012)

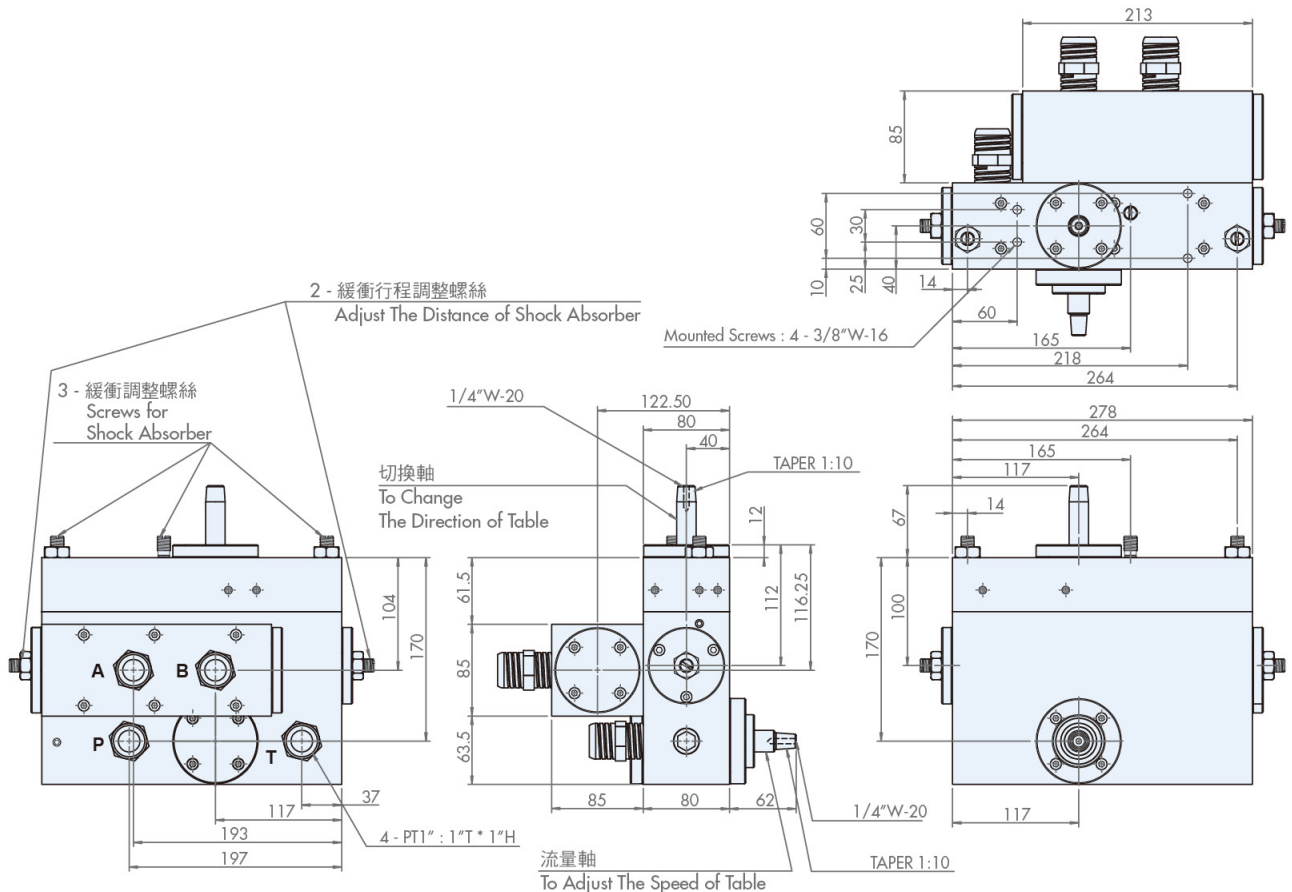
符號 SYMBOLS



規格 MODEL SPEC.

型號 Model	最大流量 Rated Flow Capacity (l/min)	最大壓力 Max. Pressure (kgf/cm ²)	口徑 Thread Connection (PT)	重量 Weight (kg)
8K (1512, 2012)	200	40	1"	43.8
訂製	300	40	1 1/4"	-

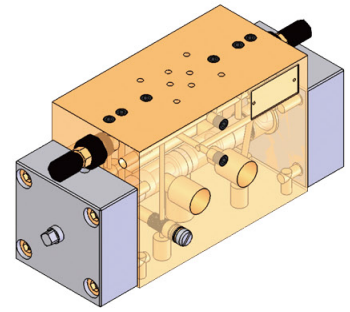
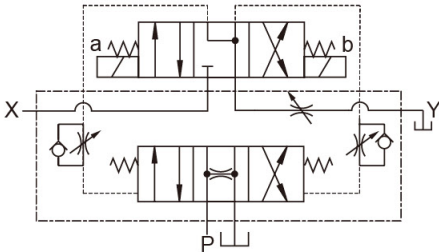
尺寸 DIMENSION (unit:mm)



電磁式引導方向閥 Solenoid Pilot Operated Directional Valve

SOL-04

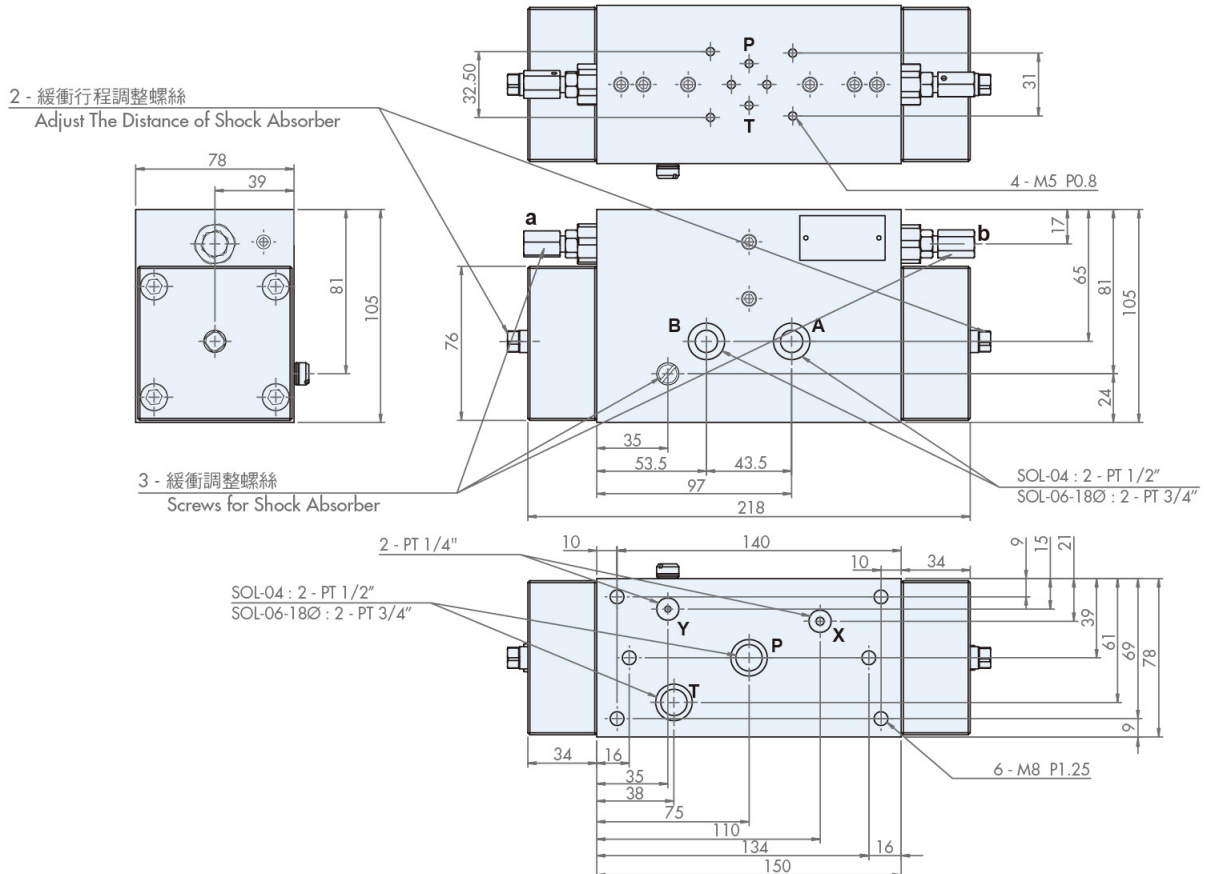
符號 SYMBOLS



規格 MODEL SPEC.

型號 Model	最大流量 Rated Flow Capacity (l/min)	最大壓力 Max. Pressure (kgf/cm ²)	口徑 Thread Connection (PT)	重量 Weight (kg)
SOL-04	30	40	1/2"	11.3
SOL-06-18Ø	45	40	3/4"	11.3

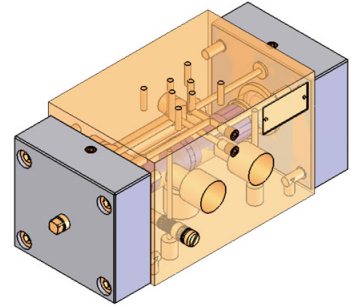
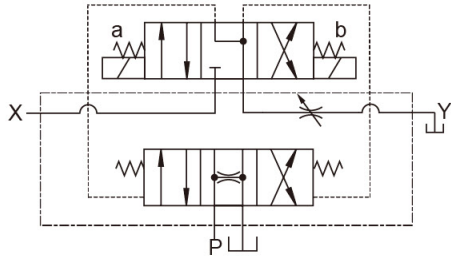
尺寸 DIMENSION (unit:mm)



電磁式引導方向閥 Solenoid Pilot Operated Directional Valve

SOL-06

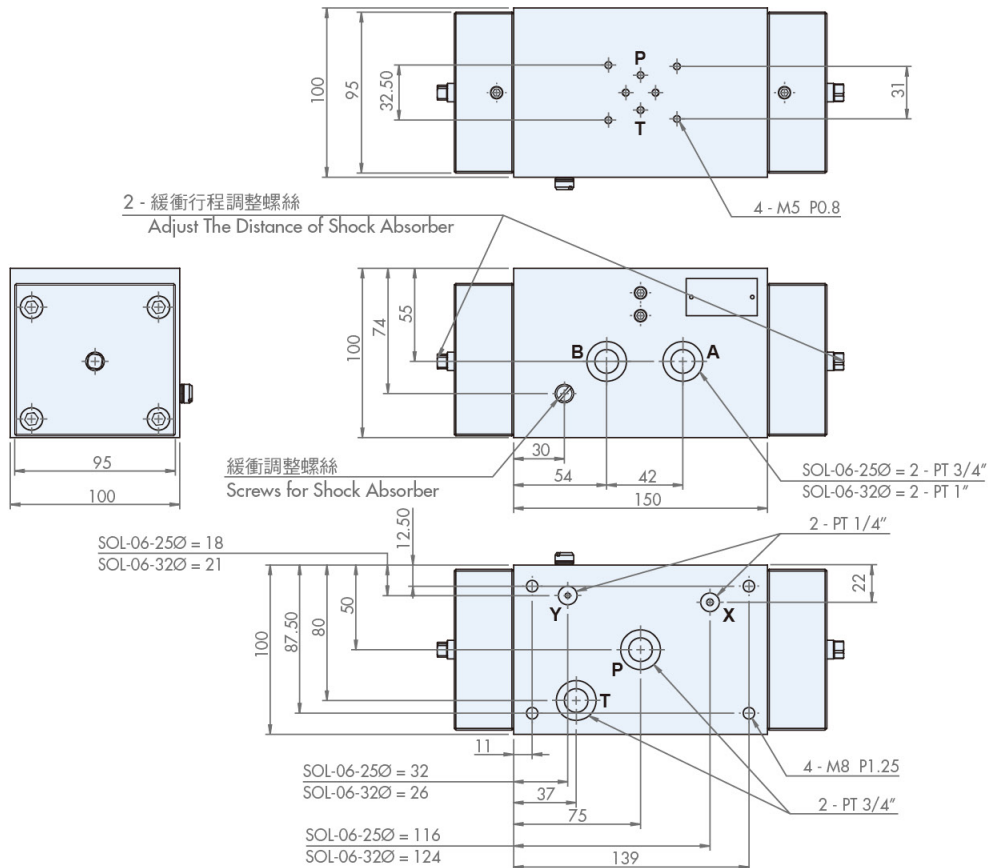
符號 SYMBOLS



規格 MODEL SPEC.

型號 Model	最大流量 Rated Flow Capacity (l/min)	最大壓力 Max. Pressure (kgf/cm ²)	口徑 Thread Connection (PT)	重量 Weight (kg)
SOL-06-25Ø	60	40	3/4"	14.3
SOL-06-32Ø	130	40	1", 3/4"	13.8

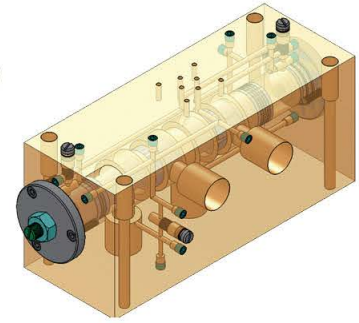
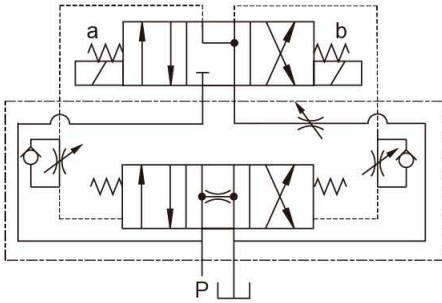
尺寸 DIMENSION (unit:mm)



電磁式引導方向閥 Solenoid Pilot Operated Directional Valve

SOL-08

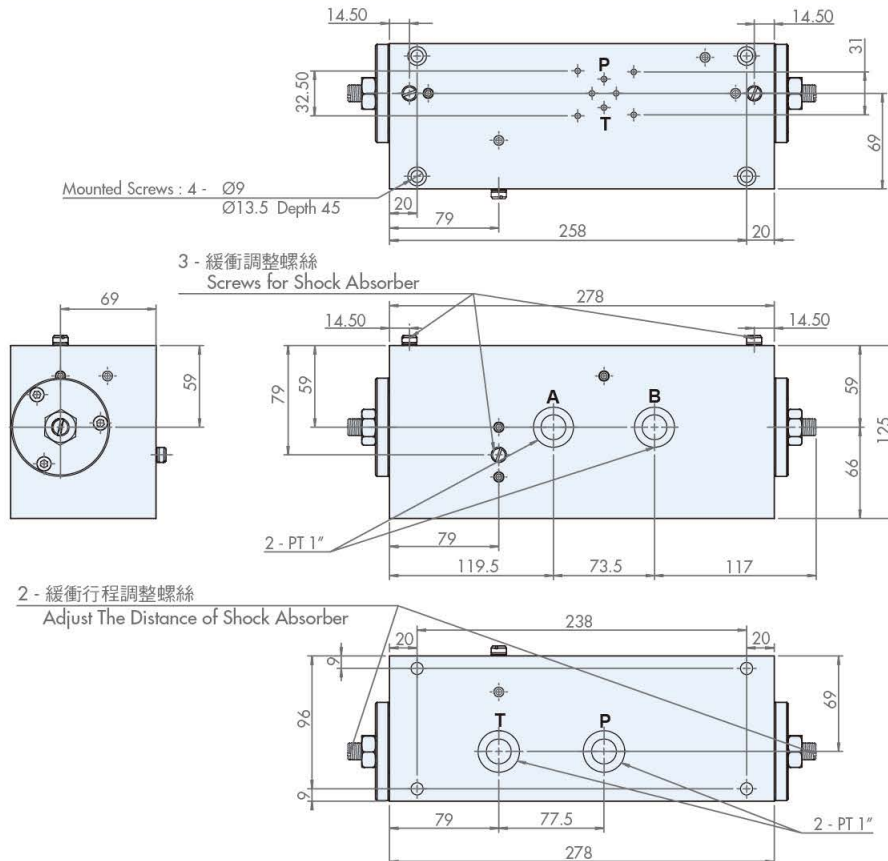
符號 SYMBOLS



規格 MODEL SPEC.

型號 Model	最大流量 Rated Flow Capacity (l/min)	最大壓力 Max. Pressure (kgf/cm ²)	口徑 Thread Connection (PT)	重量 Weight (kg)
SOL-08	200	40	1"	24.4
訂製	300	40	1 1/4"	-

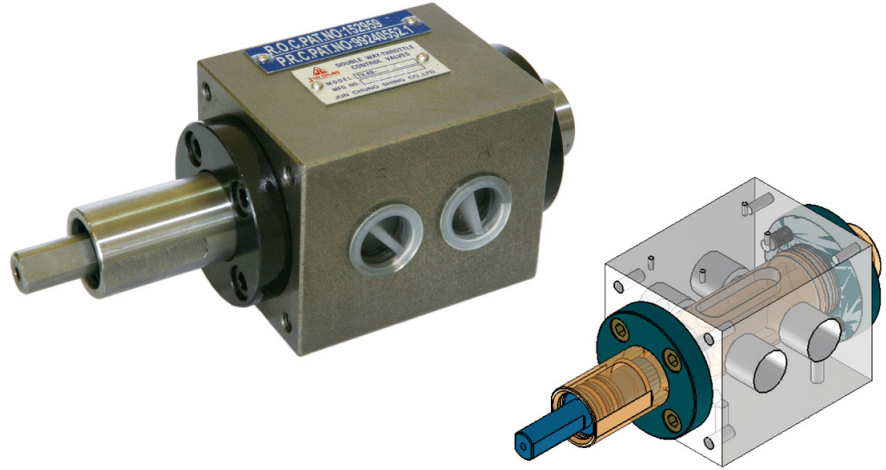
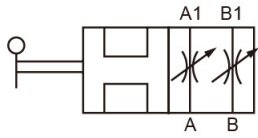
尺寸 DIMENSION (unit:mm)



雙位式流量控制閥 Double Way-Throttle Control Valve

TV-AB-04

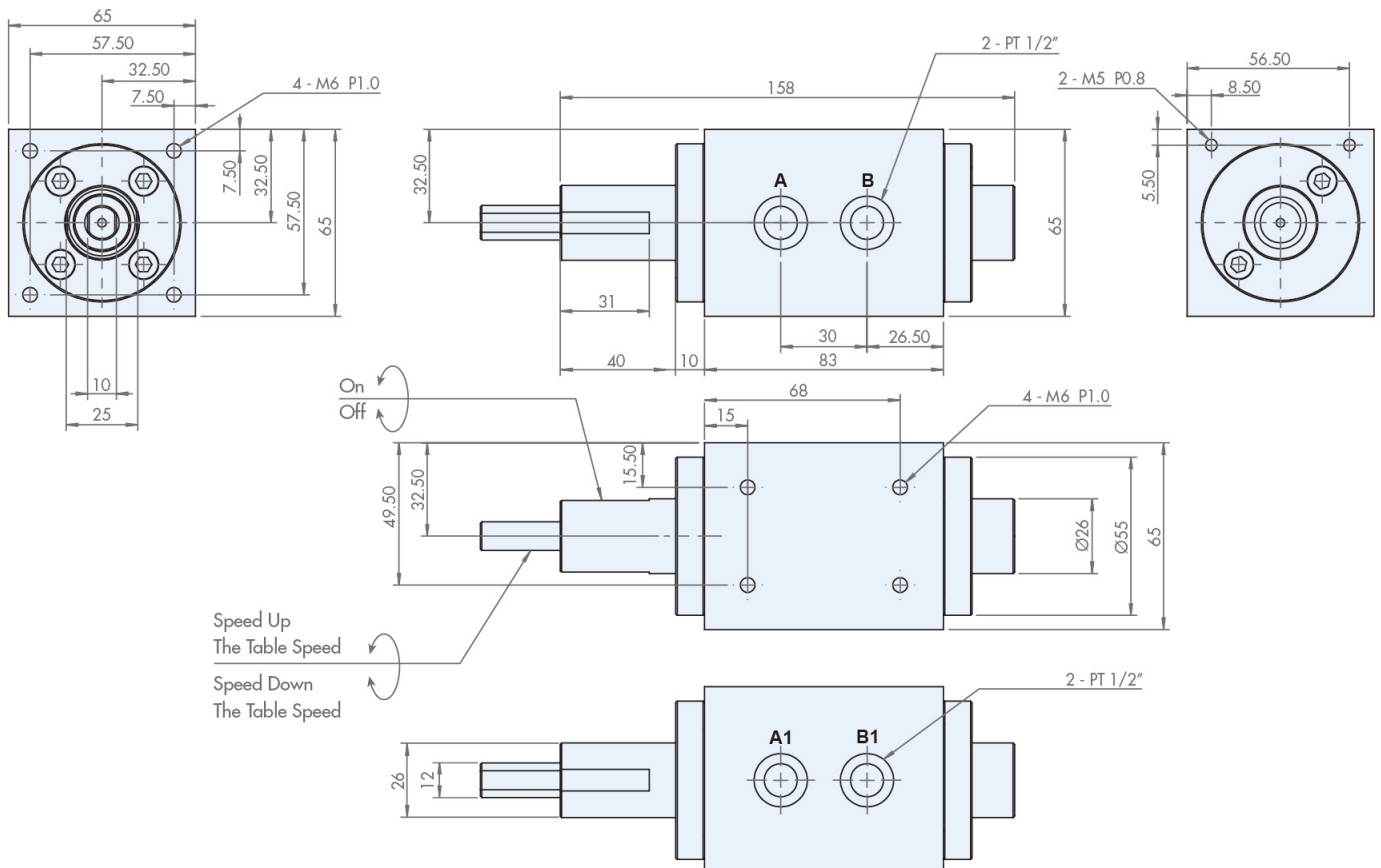
符號 SYMBOLS



規格 MODEL SPEC.

型號 Model	最大流量 Rated Flow Capacity (l/min)	最大壓力 Max. Pressure (kgf/cm ²)	口徑 Thread Connection (PT)	重量 Weight (kg)
TV-AB-04	80	40	1/2"	2.835

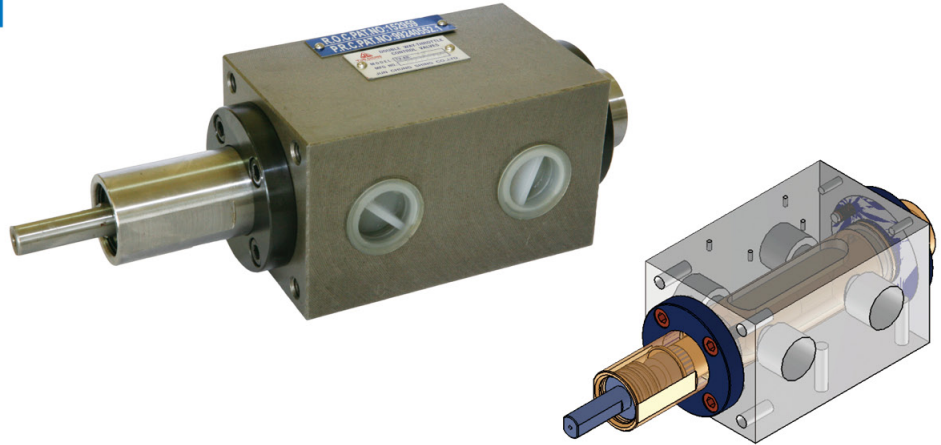
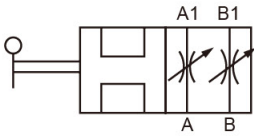
尺寸 DIMENSION (unit:mm)



雙位式流量控制閥 Double Way-Throttle Control Valve

TV-AB-06

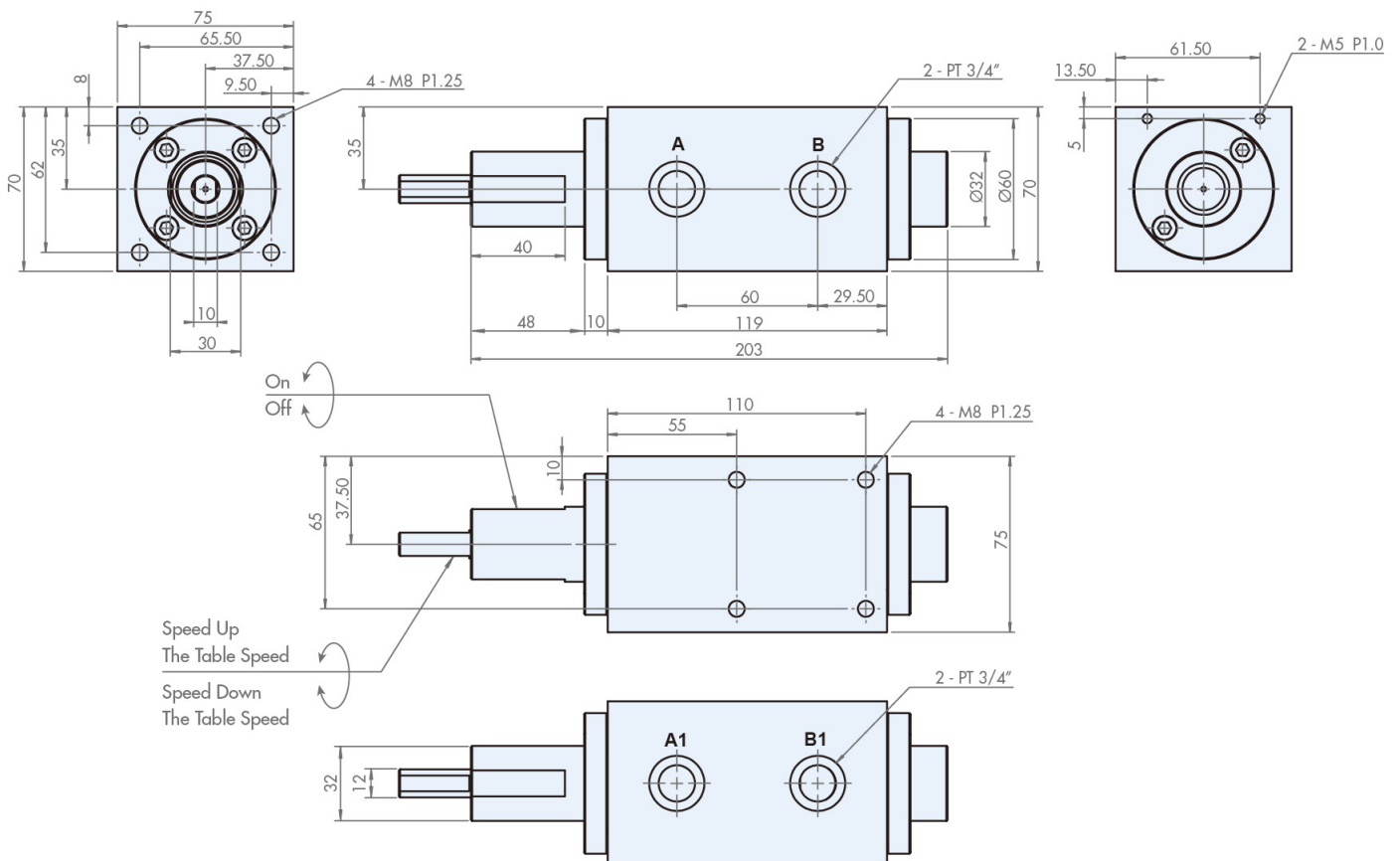
符號 SYMBOLS



規格 MODEL SPEC.

型號 Model	最大流量 Rated Flow Capacity (l/min)	最大壓力 Max. Pressure (kgf/cm ²)	口徑 Thread Connection (PT)	重量 Weight (kg)
TV-AB-06	130	40	3/4"	4.7

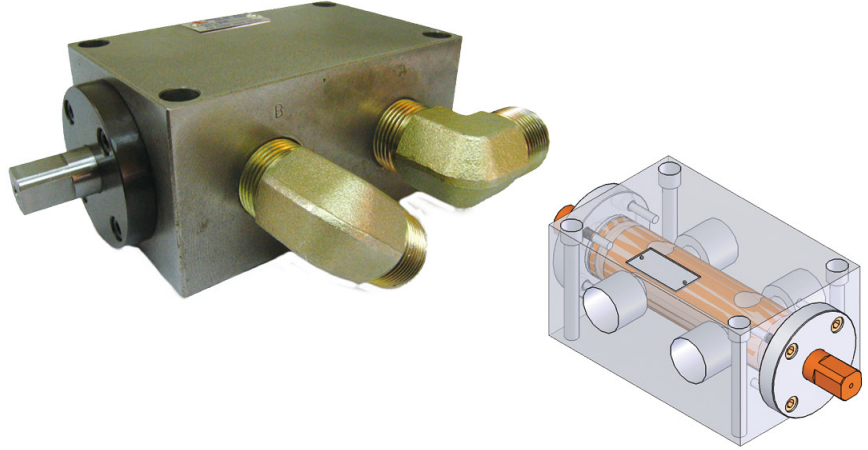
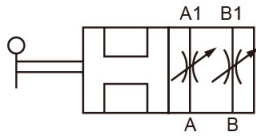
尺寸 DIMENSION (unit:mm)



雙位式流量控制閥 Double Way-Throttle Control Valve

TV-AB-08

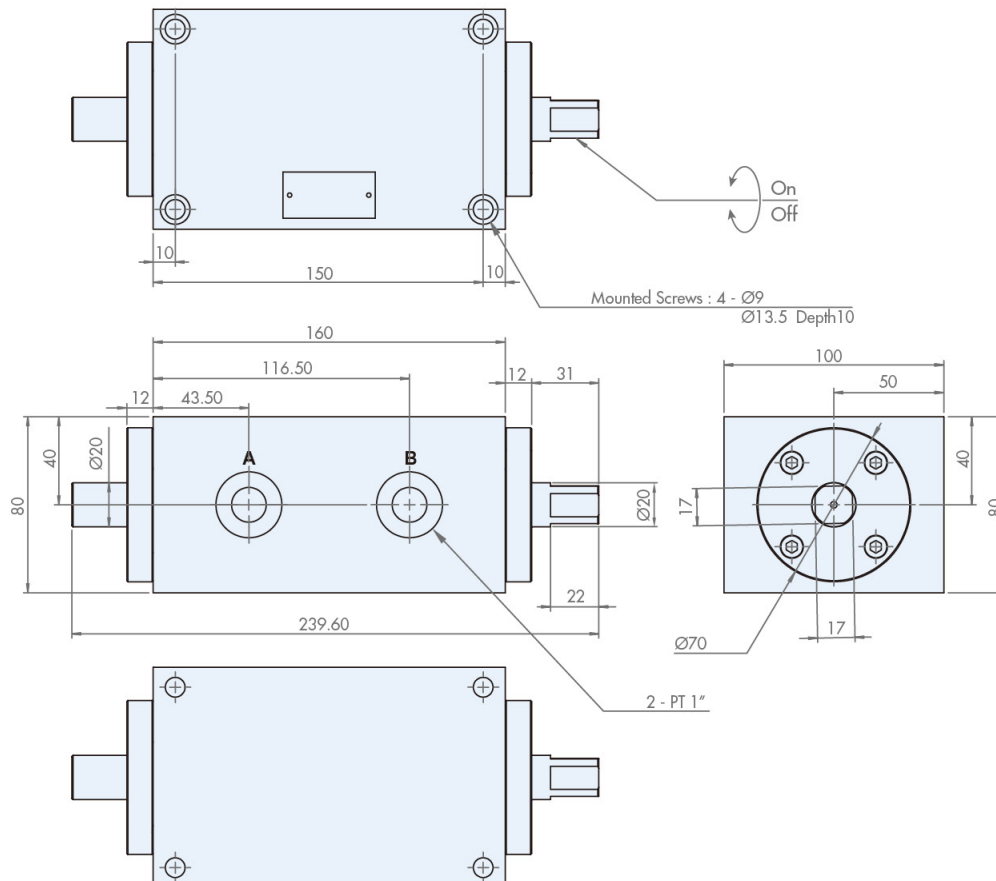
符號 SYMBOLS



規格 MODEL SPEC.

型號 Model	最大流量 Rated Flow Capacity (l/min)	最大壓力 Max. Pressure (kgf/cm ²)	口徑 Thread Connection (PT)	重量 Weight (kg)
TV-AB-08	160	40	1"	9.1

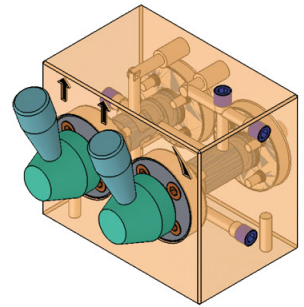
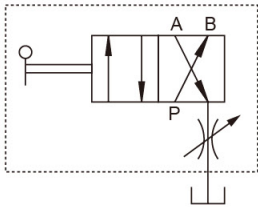
尺寸 DIMENSION (unit:mm)



油壓平整閥 (砂輪修整器) For Dresser Mounted on Wheel Head

DMOW

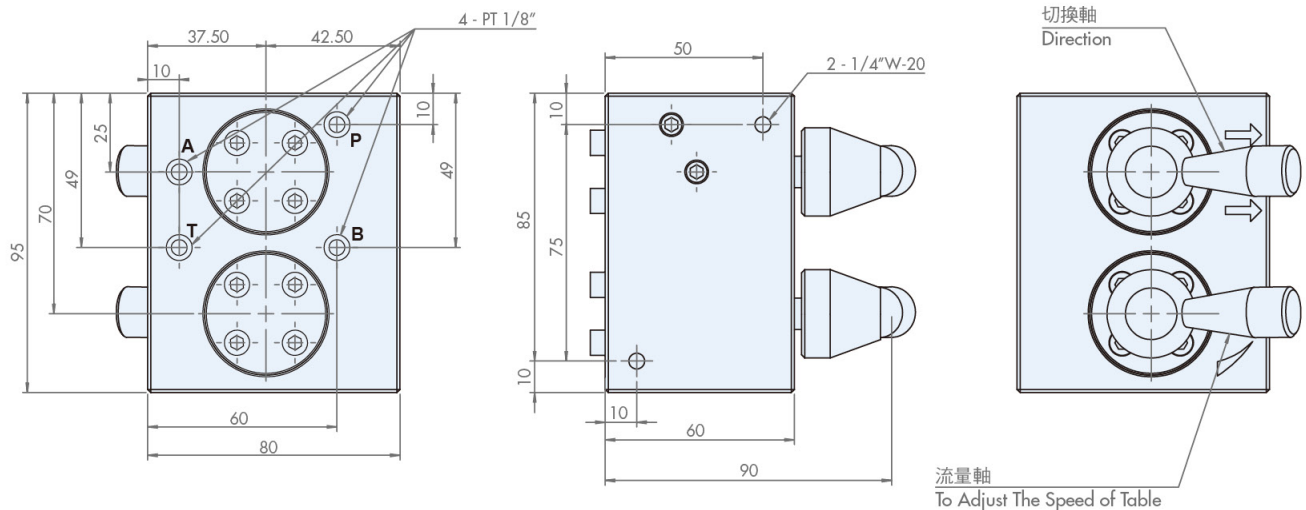
符號 SYMBOLS



規格 MODEL SPEC.

型號 Model	最大流量 Rated Flow Capacity (l/min)	最大壓力 Max. Pressure (kgf/cm ²)	口徑 Thread Connection (PT)	重量 Weight (kg)
DMOW	10	40	1/8"	3.2

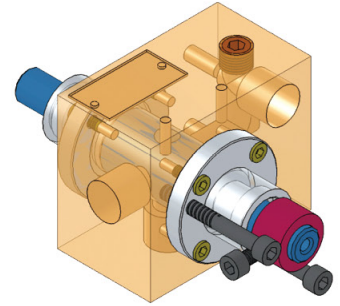
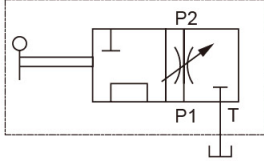
尺寸 DIMENSION (unit:mm)



流量控制閥 (雙軸) Throttle Control Valve

SOL-04TV

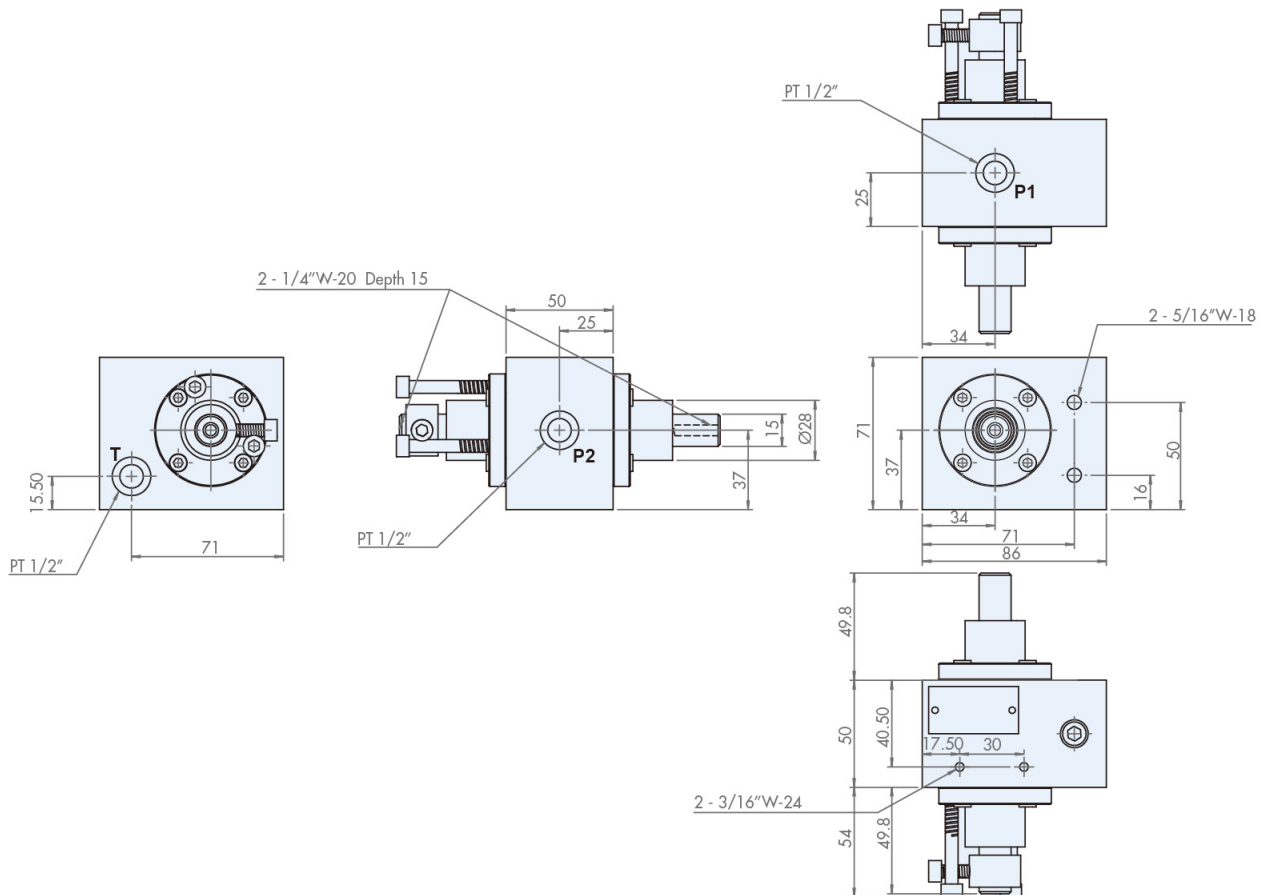
符號 SYMBOLS



規格 MODEL SPEC.

型號 Model	最大流量 Rated Flow Capacity (l/min)	最大壓力 Max. Pressure (kgf/cm ²)	口徑 Thread Connection (PT)	重量 Weight (kg)
SOL-04TV	40	40	1/2"	2.52

尺寸 DIMENSION (unit:mm)

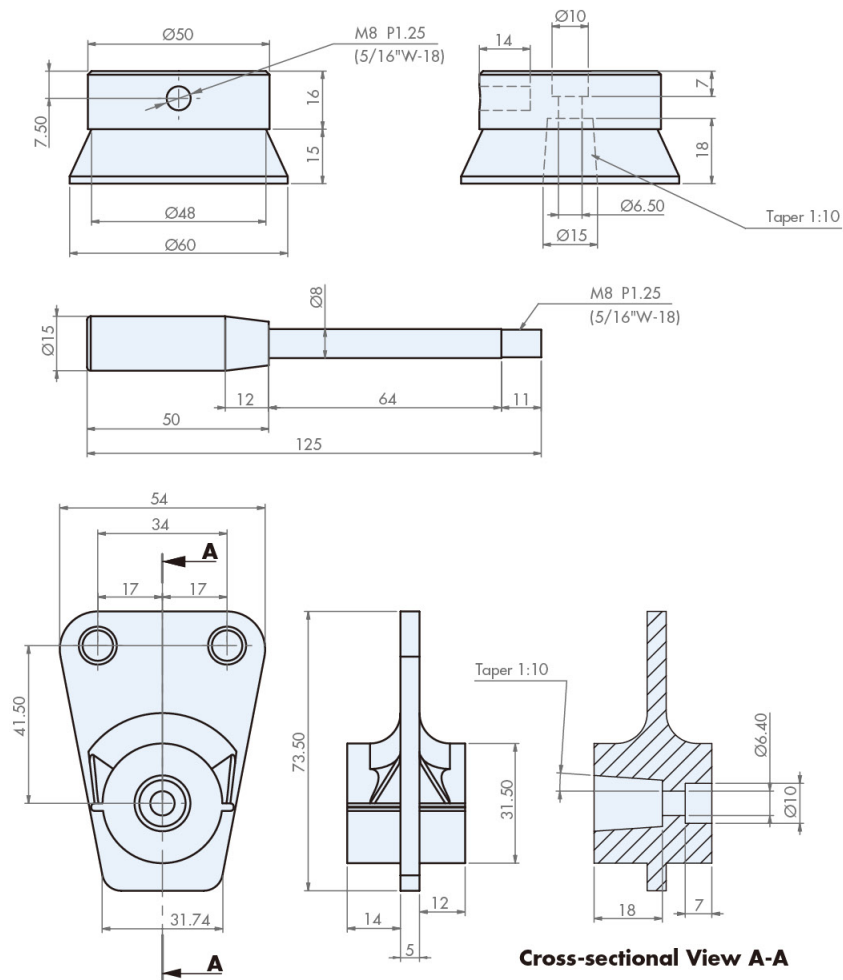


控制把手組 Control Shaft

CS



尺寸 DIMENSION (unit:mm)

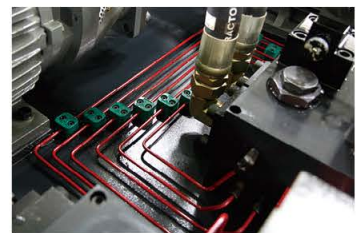


Hydraulic Power Unit for Surface Grinder

平面磨床液壓站

提供平面磨床液壓系統規劃、製造、測試。

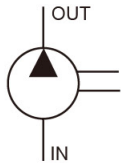
We provide customized power units for any different sizes and some particular surface grinders.



磨床專用定量泵 (大排量) Fixed Displacement Vane Pumps Apply to Surface Grinders (Mega Flow Rate)

JQ3X

符號 SYMBOLS



特性: 用於大流量平面磨床, 效率高, 噪音低, 壽命長, 專為此特性做設計。

型號說明 ORDER CODES

JQ3X - 116 - F - R A A - 01

JQ3X -	116 -	F -	R	A	A -	01
型號 Model Name	吐出量 Delivery	裝配型式 Mounting	迴轉方向 (自軸側觀看) Direction of Rotation (Viewed from Shaft Side)	出口位置 Discharge Position	進口位置 Suction Position	心軸種類 Shaft Type
JQ3X	94, 108, 116, 125, 136	F: 法藍型 L: 腳座型 F: flange type L: foot type	R: 順時針方向 L: 逆時針方向 R: clockwise direction L: counter clockwise direction	A: 向上 B: 向下 R: 右邊 L: 左邊 A: upwrrd (normal) B: downward R: on right hand L: on left hand	A: 向上 B: 向下 R: 右邊 L: 左邊 A: upwrrd (normal) B: downward R: on right hand L: on left hand	01: normal

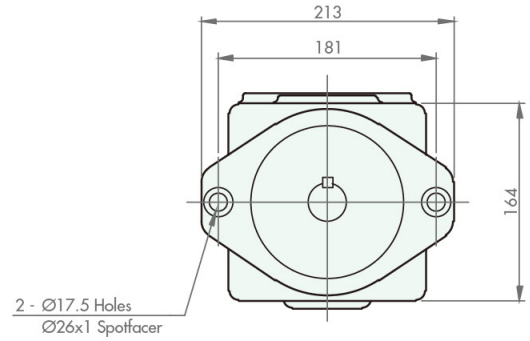
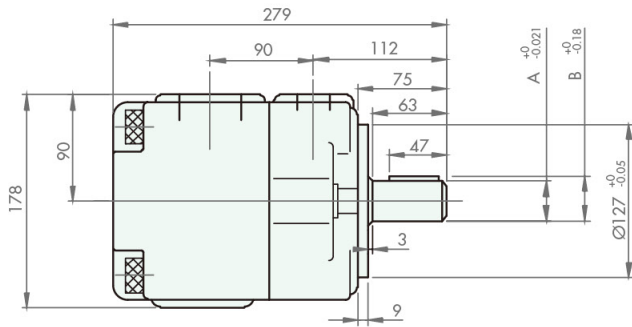
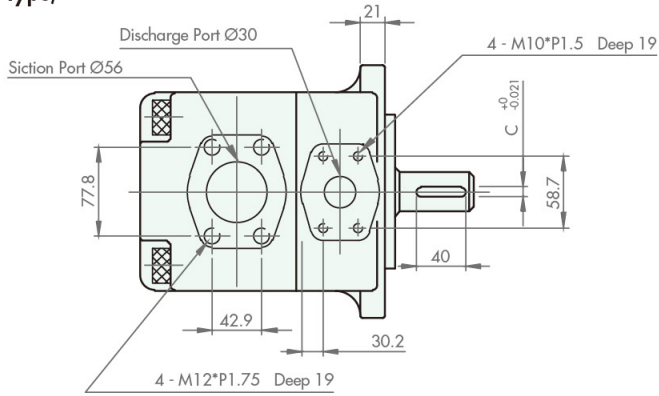
規格 MODEL SPEC.

型號 Model	吐出量 Geomefric Displ. (c.c./rev)	最大壓力 Max. Pressure (kgf/cm ²)	最高轉速 Max. Speed (r.p.m)	使用抗磨液壓油 Using Antiwar Oil or Phosphate Ester Fluid		使用水乙二醇液 Using Water Glycol Fluid		使用油包水乳化液 Using Water-in-oil Emulsions		最低轉速 Min. Speed (r.p.m)
				最高壓力 Max. Pressure (kgf/cm ²)	最高轉速 Max. Speed (r.p.m)	最高壓力 Max. Pressure (kgf/cm ²)	最高轉速 Max. Speed (r.p.m)	最高壓力 Max. Pressure (kgf/cm ²)	最高轉速 Max. Speed (r.p.m)	
JQ3X	94	210	1800							
JQ3X	108	210	1800	175	1800					
JQ3X	116	210	1800			160	1200	140	1200	600
JQ3X	125	210	1800	175	1500					
JQ3X	136	210	1800							

型號 Model	單泵重量 Single Pump Weight (kg)		
	法蘭型 Flange Type	腳座型 Foot Type	出入口口法蘭 Outlet & Inlet Flange
JQ3X	36	44	2.0

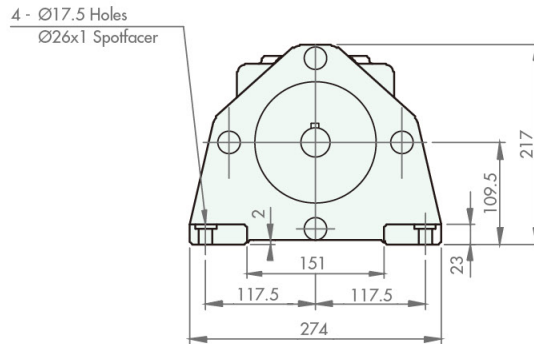
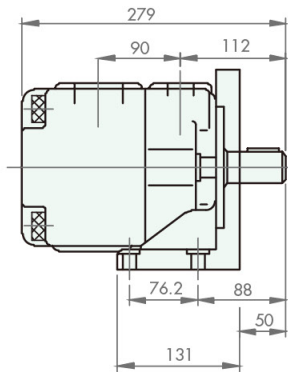
尺寸 DIMENSION (unit:mm)

JQ3X (Flange Type)



	A	B	C
No.01 - shaft	Ø31.75	35.32	7.95
No.02 - shaft	Ø34.9	38.56	7.95

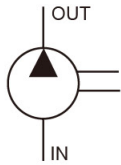
JQ3X (Foot Type)



磨床專用定量泵 (大排量) Fixed Displacement Vane Pumps Apply to Surface Grinders (Mega Flow Rate)

KT6CP

符號 SYMBOLS



特性: 用於大流量平面磨床, 效率高, 噪音低, 壽命長, 專為此特性做設計。

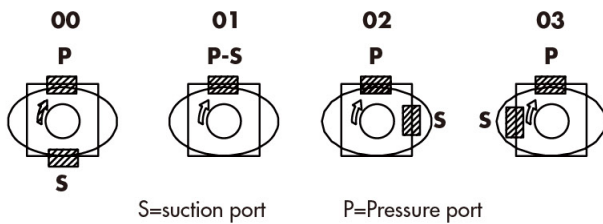
型號說明 ORDER CODES

KT6CP B14 - 2 R 00 - B 1 *

KT6CP	B14	1	R
型號 Model Name	凸輪環容積排量 Cam Ring Volumetric Displacement (cm ³ /rev)	心軸種類 Shaft Type	迴轉方向 (自軸側觀看) Direction of Rotation (Viewed from Shaft Side)
KT6CP	B14: 46.0 B17: 58.3 B20: 63.8 B22: 70.3 B25: 79.3 B28: 88.8 B31: 100.0	2 : keyed (no SAE) 3 : splined (SAE C) X : splined	R : 順時針方向 L : 逆時針方向 R : clockwise direction L : counter clockwise direction

00 -	B	1	*
進出口位置 Porting combination	設計編號 Design Number	油封類別 Seal Class	客製化修改 Modifications
00 : standard	B	1 : S1 (for mineral oil) 4 : S4 (for fire resistant fluids) 5 : S5 (for mineral oil and fire resistant fluids)	*

進出口位置 Porting Combination



規格 MODEL SPEC.

KT6CP Operating Characteristics - Typical [24cSt]

Series	Volumetric Displacement Vp (ml/rev)	Flow q (l/min) N = 1500 r.p.m			Input power P (KW) N = 1500 r.p.m			P Max. (kgf/cm ²)	Max. Speed (r.p.m)
		p = 0 bar	p = 140 bar	p = 240 bar	p = 7 bar	p = 140 bar	p = 240 bar		
B014	46.0	69.0	63.5	59.0	1.9	17.6	29.5	275	2800
B017	58.3	87.4	82.0	77.5	2.1	21.9	36.9	275	2800
B020	63.8	95.7	90.2	85.7	2.2	23.8	40.2	275	2800
B022	70.3	105.4	100.0	95.5	2.3	26.1	44.1	275	2800
B025 *1	79.3	118.9	113.5	109.0	2.5	29.2	49.5	275	2500
B028 *1	88.8	133.2	127.7	124.5 *2	2.8	32.7	48.5 *2	210	2500
B031 *1	100.0	150.0	144.5	141.3 *2	2.8	36.5	54.4 *2	210	2500

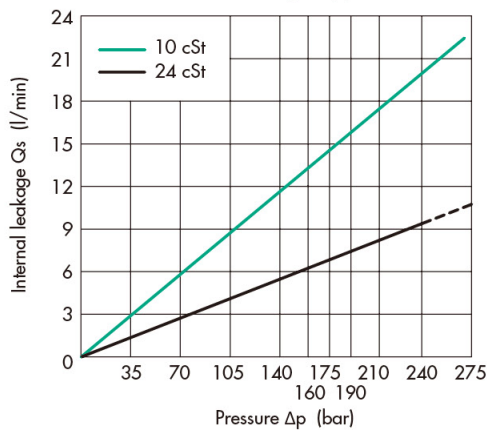
*1: B025 - B028 - B031 = 2500 r.p.m max.

*2: B028 - B031 = 210 bar max. int.

Min. Speed 600 r.p.m

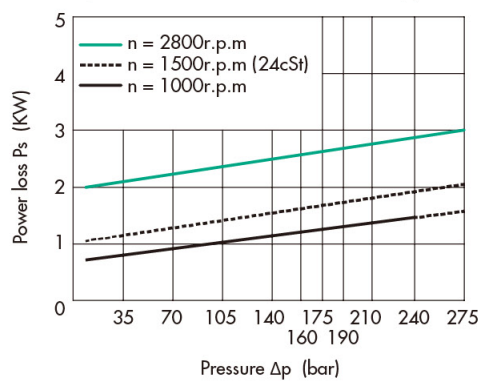
性能圖表 PERFORMANCE CURVES

Internal Leakage (typical)

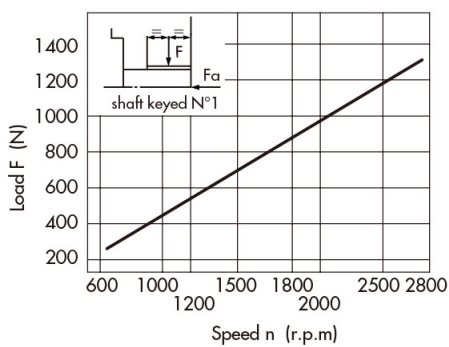


Don't operate pump more than 5 sec. at any speed or viscosity if internal leakage is more than 50% of theoretical flow.

Hydromechanical Power Loss (typical)

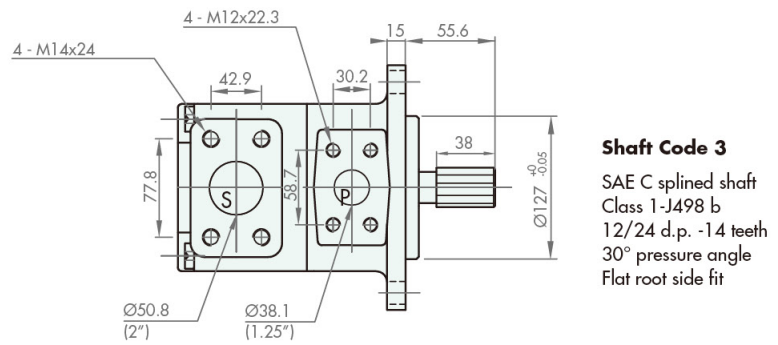
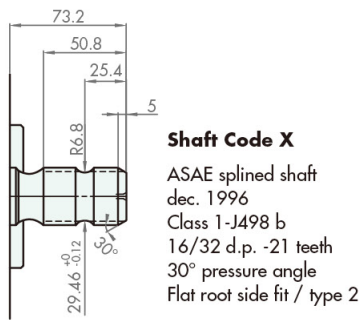
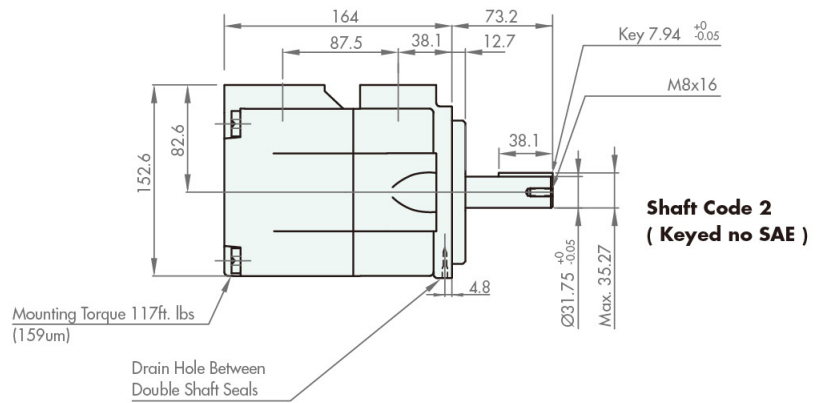
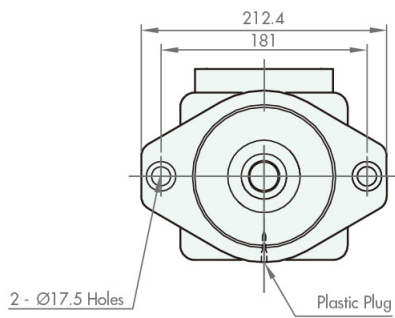


Permissible Radial Load



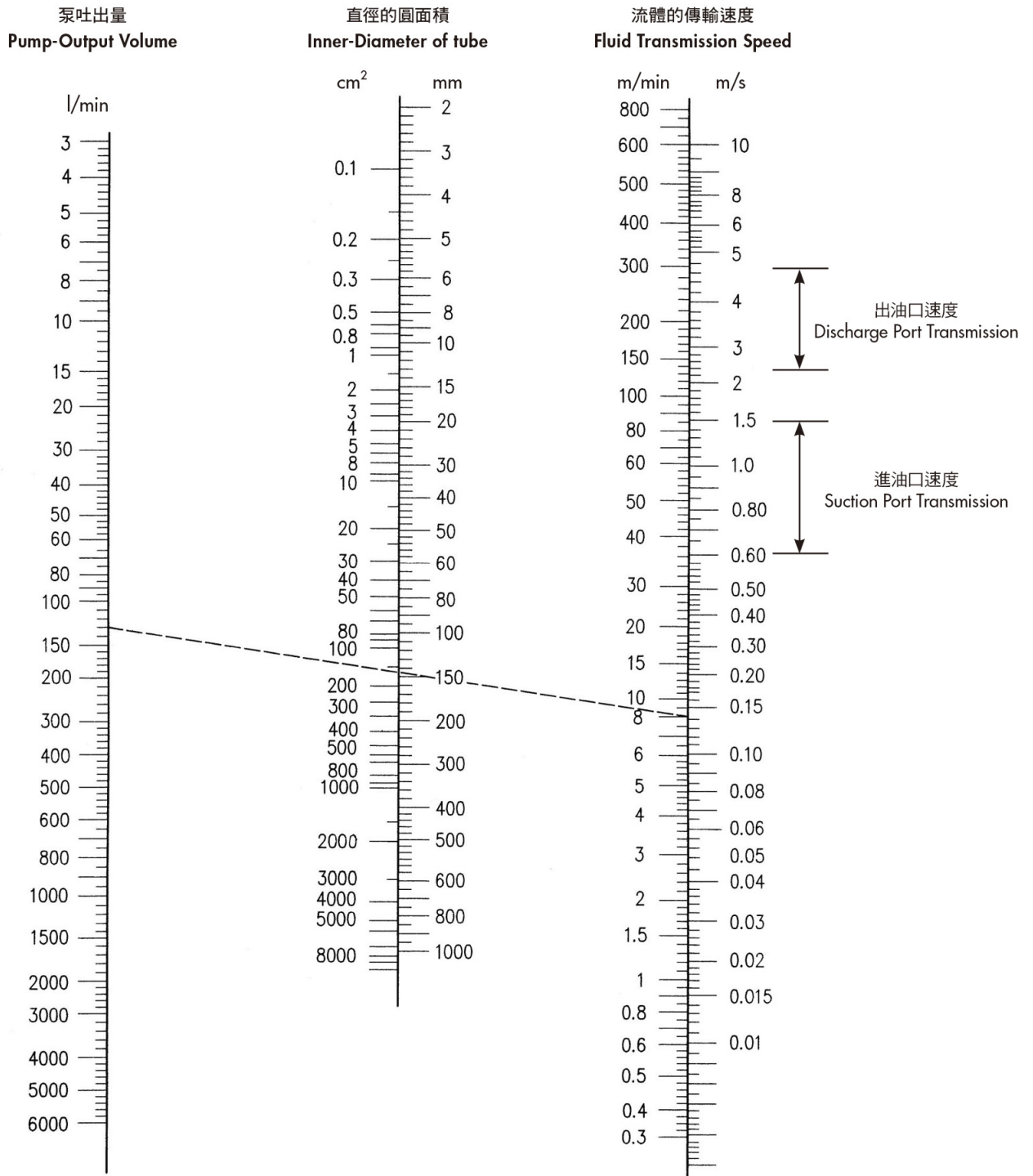
Max. permissible axial load Fa=800N

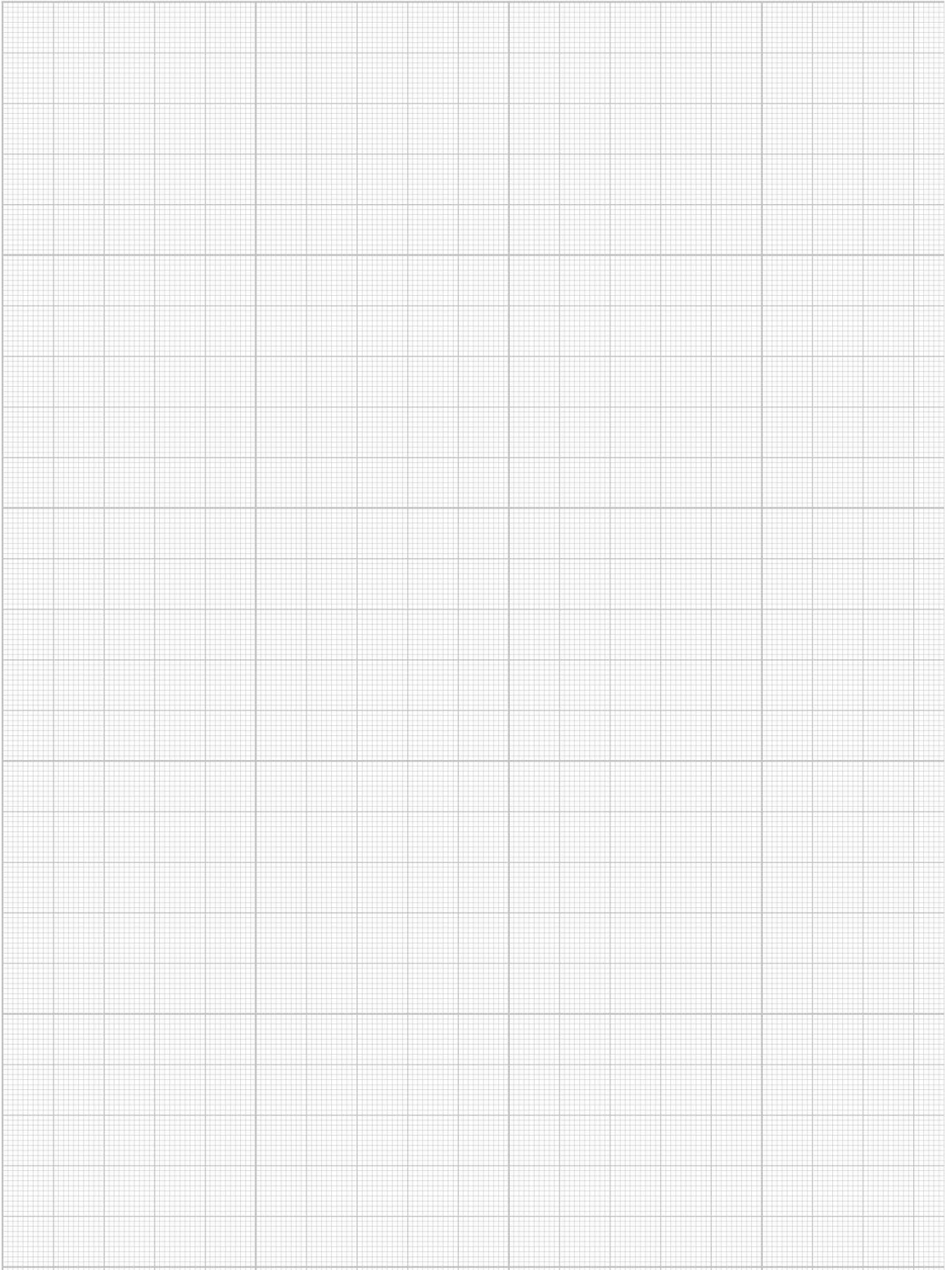
尺寸 DIMENSION (unit:mm)

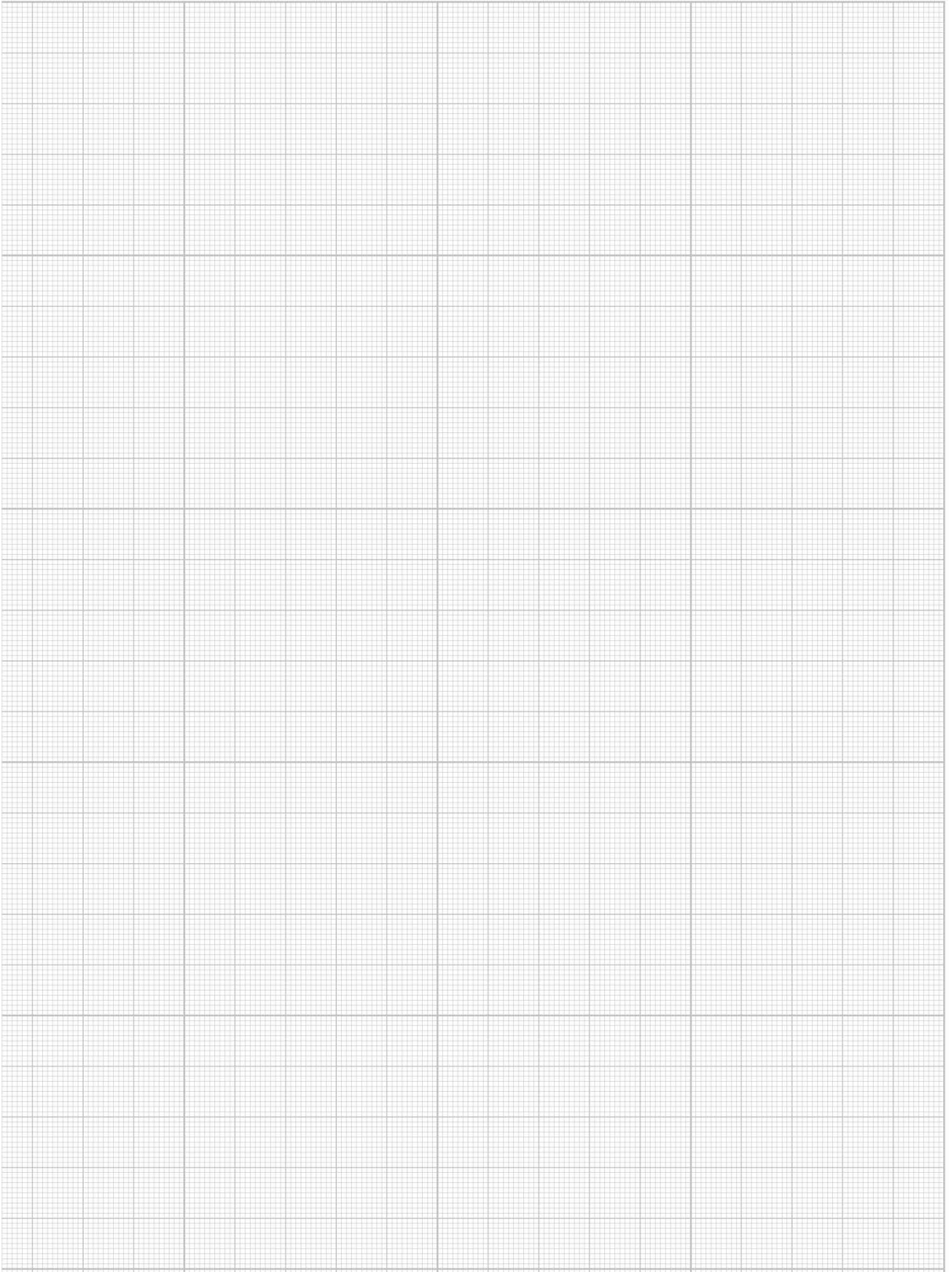


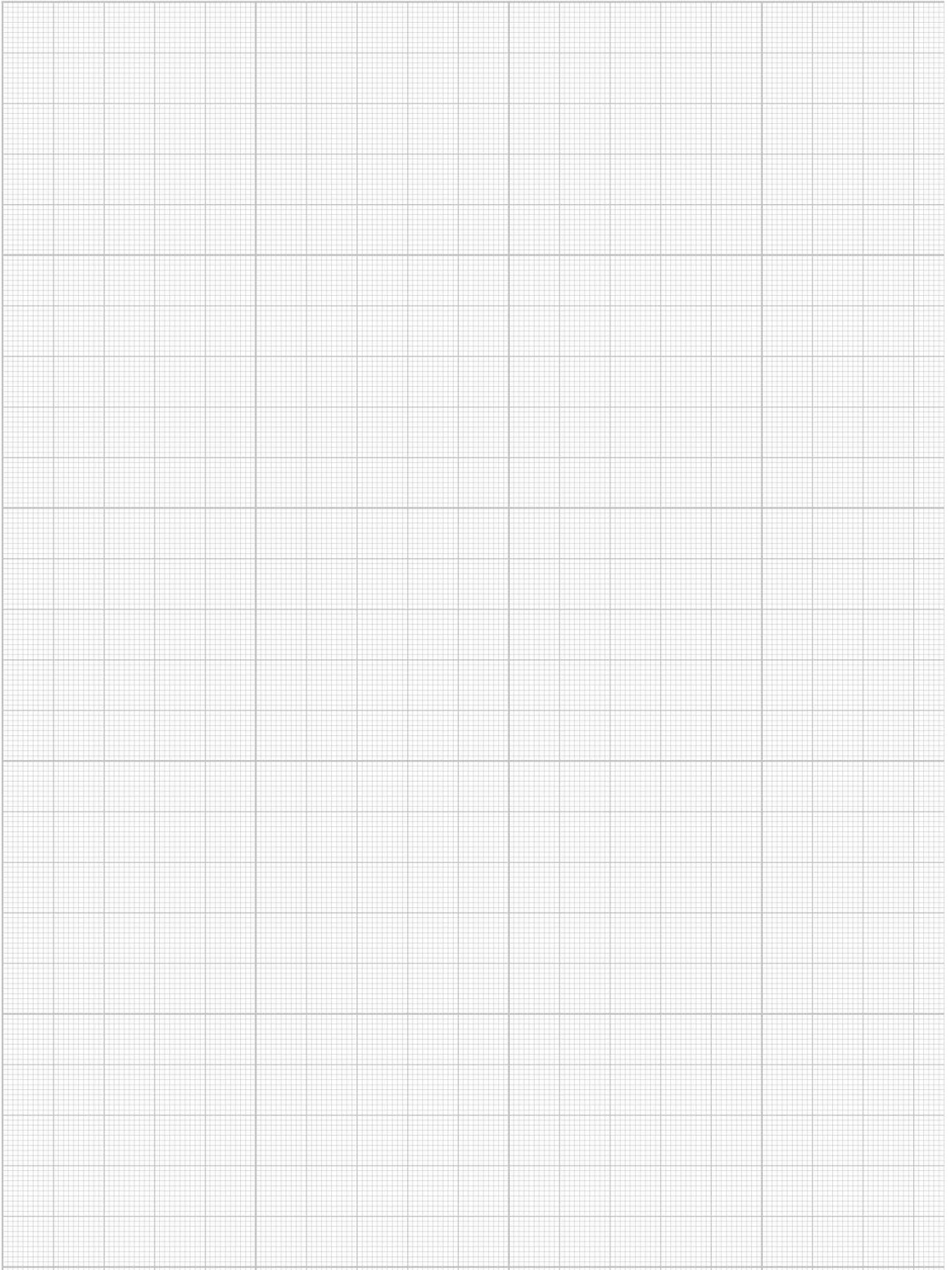
Piping Diameter - Fluid Transmission - Flow Volume Drawing

使用管徑與流速關係表











駿全興股份有限公司
JUN CHUNG SHING CORP., LTD.

414018 台中市烏日區慶光路80之13號
No. 80-13, Qingguang Rd., Wuri Dist.,
Taichung City 414018, Taiwan
TEL : +886-4-2334-5560, +886-4-2334-5550
FAX : +886-4-2334-5570
Email : jcs.com@msa.hinet.net
jcservice@junchung.com.tw



* 因持續開發改進，本公司保留尺寸、規格等修改之權利，恕不另行通知。
We reserve the right to make changes without notice in the course of continued development.
© JUN CHUNG SHING CORP., LTD. All rights reserved.

more information
www.junchung.com.tw

